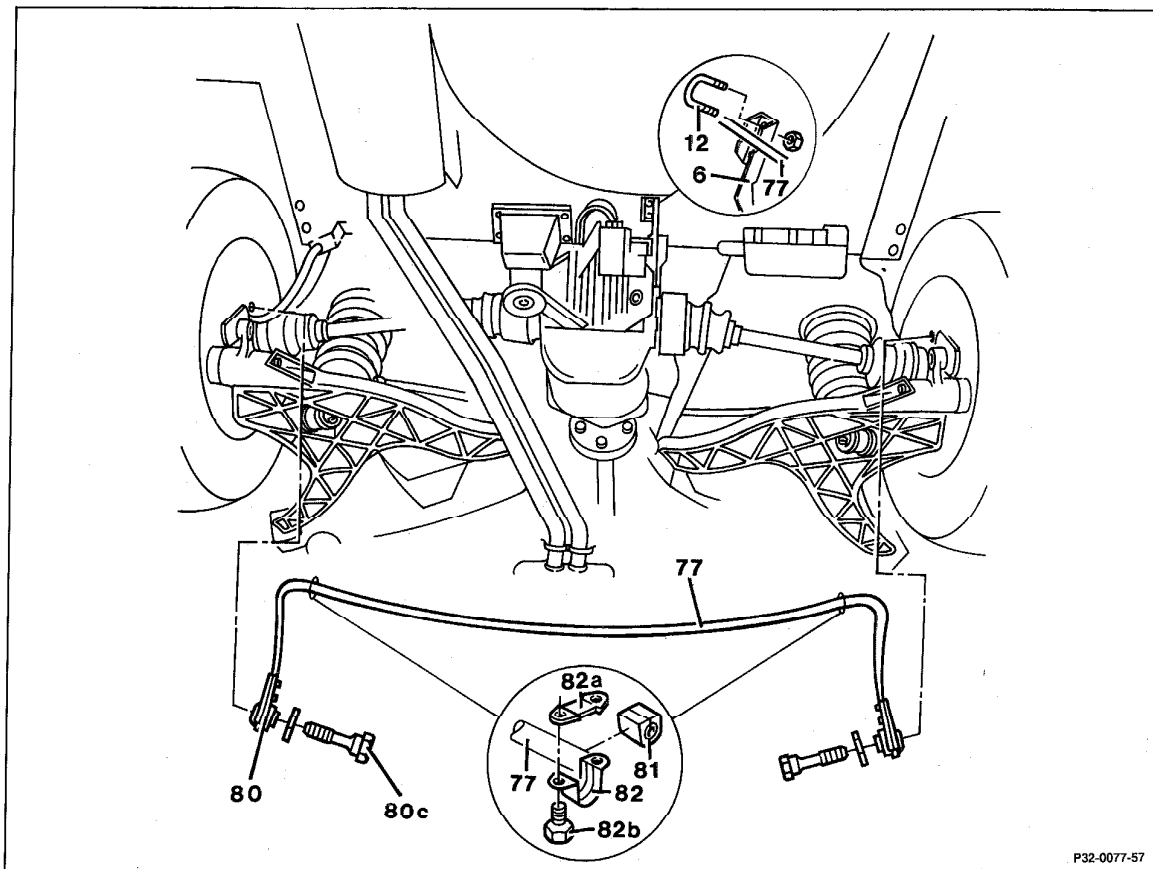


32-320 R and R rear stabilizer bar (suspension w/ anti-squat geometry)



P32-0077-57

P32-0077-57

On vehicles with automatic level control	loosen bracket (12) and remove lever (6) from stabilizer bar (77). After assembly check control point, adjust (40-310).
Vehicle	jack up, lower and remove right rear wheel (wheel lug bolts 110 Nm).
Rear exhaust mount	unhook, hook in, lower exhaust pipe slightly and support.
Necked-down bolts (80c)	for left and right wheel carrier support (80), screw out, screw in, 80 Nm.
Hex. head bolts (82b)	for left and right retaining brackets (82), screw out, screw in, 70 Nm.

32-320 R and R rear stabilizer bar (suspension w/ anti-squat geometry)

Retaining plate (82a) and rubber bushing (81) . . . remove, install.
 Stabilizer bar (77) remove, install.

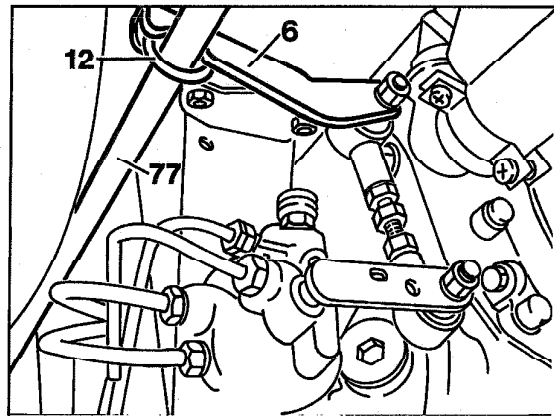
Data

Stabilizer bar	Diameter	Rubber mounts for stabilizer bar mount	
Part number		Part number	Bore diameter
126 326 39 65 ¹⁾	14	126 326 37 81	14
126 326 51 65 ²⁾			

¹⁾ 1st version up to 8.85
²⁾ 2nd version as of 9.85

Removal

1 On vehicles with automatic level control remove bracket (12) and separate lever (6) from stabilizer bar (77).



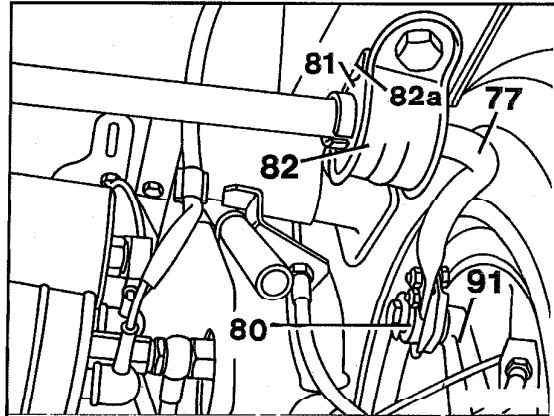
P32-5295-13A

Illustrated on rear axle with anti-squat geometry and automatic level control 2nd version as of 9.85

- 2 Jack up vehicle and remove right rear wheel.
- 3 Unhook rubber rings for rear exhaust mount, lower exhaust pipes slightly and support.

32-320 R and R rear stabilizer bar (suspension w/ anti-squat geometry)

- 4 Screw out necked down bolts for left and right supports (80) for wheel carriers.
- 5 Screw out hex. head bolts for left and right retaining brackets (82) for stabilizer bar mount.
- 6 Remove stabilizer bar (77) to right.



P32-2228-13

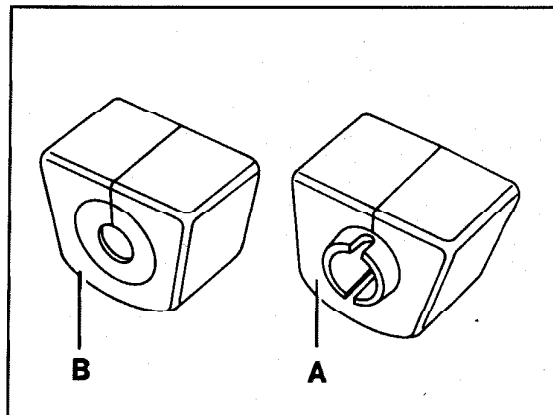
- 80 Support for wheel carrier on stabilizer bar
- 81 Rubber mount
- 82 Bottom retaining bracket
- 82a Retaining plate
- 91 Wheel carrier

Installation

- 7 Check rubber bushing for stabilizer bar mount and rubber bushing for support of wheel carrier on stabilizer bar.

Note

As of 09/81 stabilizer bars with forged ends have been installed. Simultaneously the rubber bushings for the stabilizer bar mount on the frame floor were modified.



P32-2237-13

- A Version up to 08/81
- B Version as of 09/81

32-320 R and R rear stabilizer bar (suspension w/ anti-squat geometry)

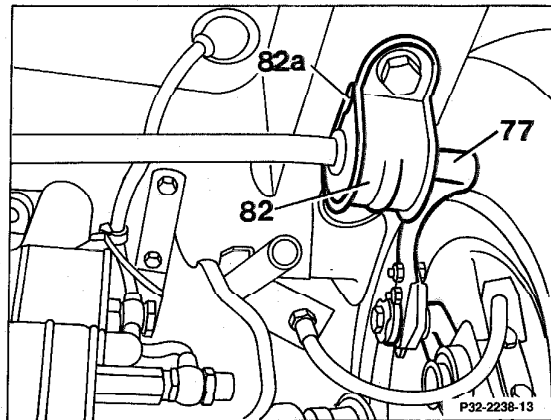
8 Check condition of threads for necked down bolts in wheel carrier, chase, if required.

9 Where applicable install lever for actuation of automatic level control on stabilizer bar.

10 Position stabilizer bar. Slide rubber bushing onto stabilizer bar with separating slit pointing up.

11 Fasten stabilizer bar (77) to frame floor while ensuring that bottom retaining bracket (82) and retaining plate (82a) are positioned correctly.

12 Install exhaust pipe and right rear wheel (wheel lug bolts 110 Nm).



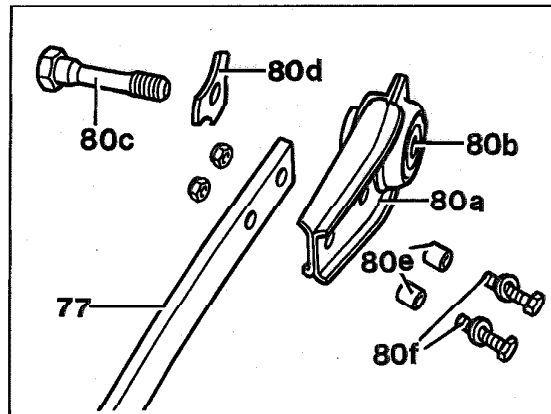
P32-2238-13

13 Connect support for stabilizer bar with wheel carrier.

Note

The contact surfaces must be absolutely clean and free of grease and oil. When tightening ensure that the inner bushing for the rubber bushing is properly seated on the wheel carrier.

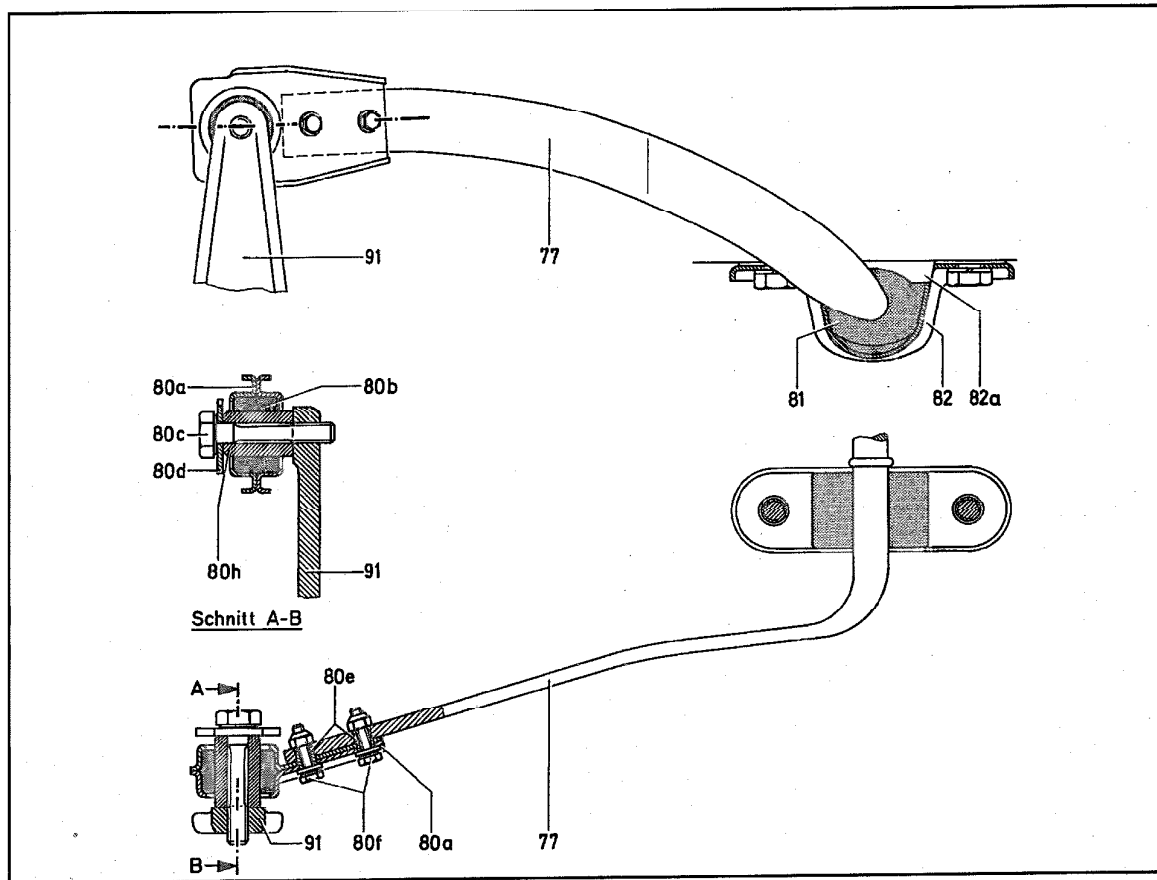
Tighten necked down bolt (80c) for wheel carrier support on stabilizer bar only with vehicle sitting on wheels ready-to-drive (80 Nm).



P32-2214-13

- 77 Stabilizer bar
- 80a Tab
- 80b Rubber mount
- 80c Necked down bolt
- 80d Washer
- 80e Clamping sleeve
- 80f Hex. head bolts with washers and self-locking nuts

32-320 R and R rear stabilizer bar (suspension w/ anti-squat geometry)



U32-5291-57

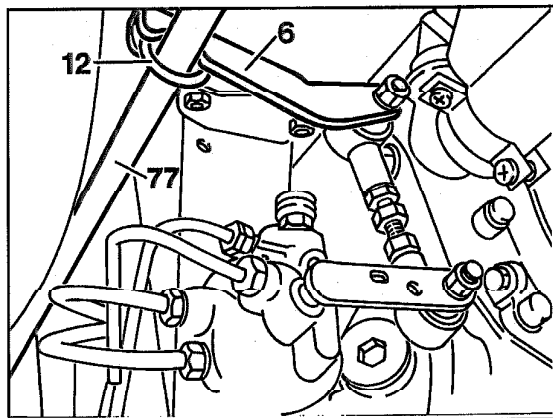
- 77 Stabilizer bar
- 80a Tab
- 80b Rubber mount
- 80c Necked down bolt
- 80d Washer
- 80e Clamping sleeves
- 80f Hex. head bolts with washers and self-locking nuts

- 80h Inner bushing for rubber bushing
- 81 Rubber mount for stabilizer bar mount on frame floor
- 82 Bottom retaining bracket
- 82a Retaining plate
- 82b Hex. head bolt
- 91 Wheel carrier

14 Additional work on vehicles with level control:

- a) Fasten lever (6) to stabilizer bar (77) by attaching bracket (12).
- b) Vehicle level at rear axle: Check control point, adjust (40-310).

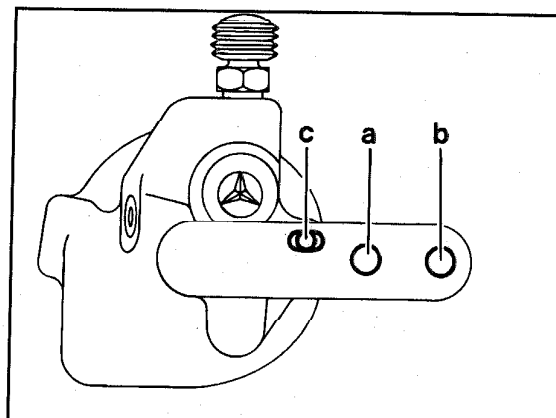
Illustrated on rear axle with anti-squat geometry and automatic level control 2nd version as of 9.85



P32-5295-13A

32-320 R and R rear stabilizer bar (suspension w/ anti-squat geometry)

The stabilizer bar link is inserted into hole "a" on vehicles without anti-squat geometry, into hole "b" on vehicles with anti-squat geometry.



c= Locating holes in lever and in housing with automatic level control shaft in center position for 4 mm dia. pin

P32-5543-13